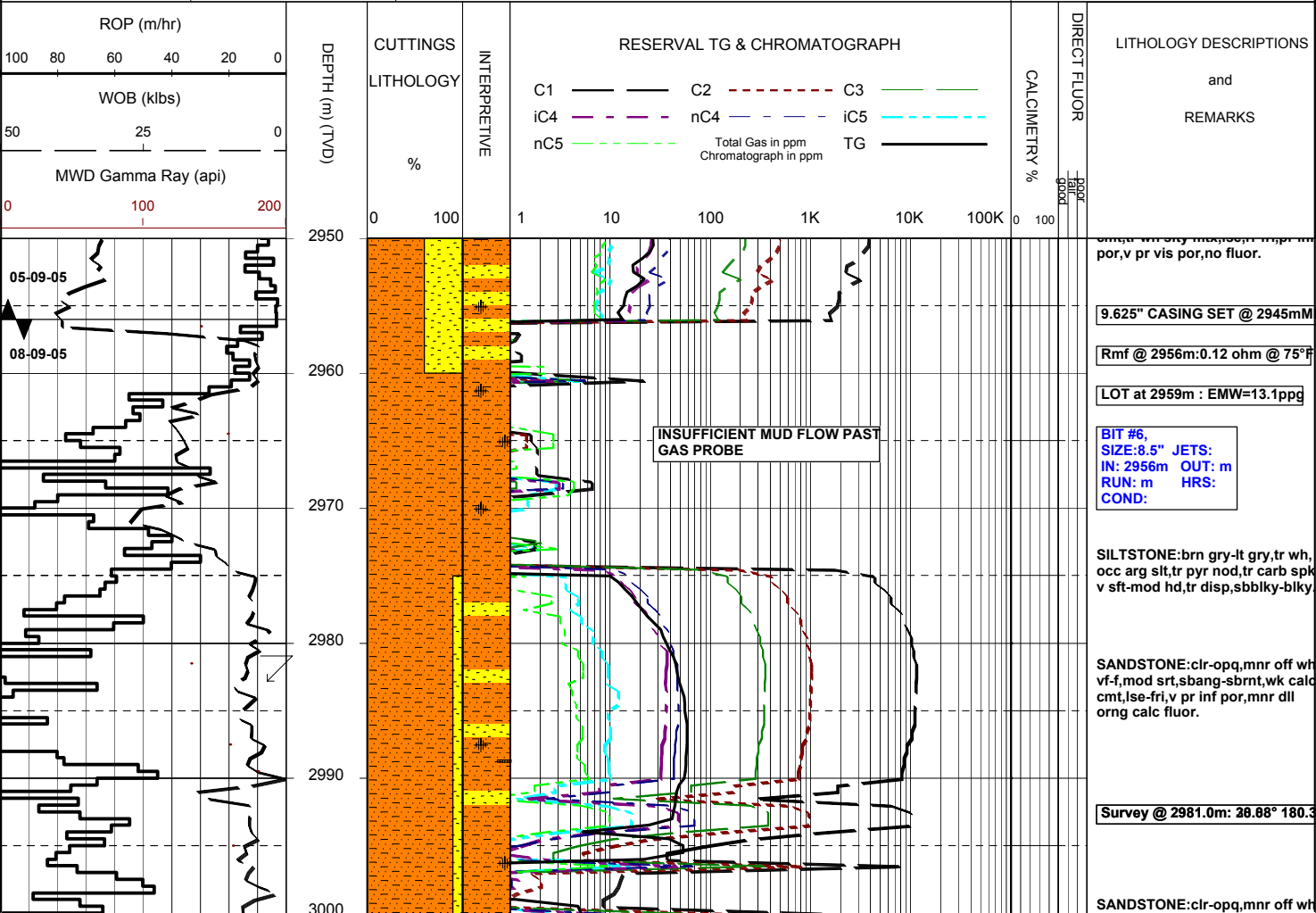


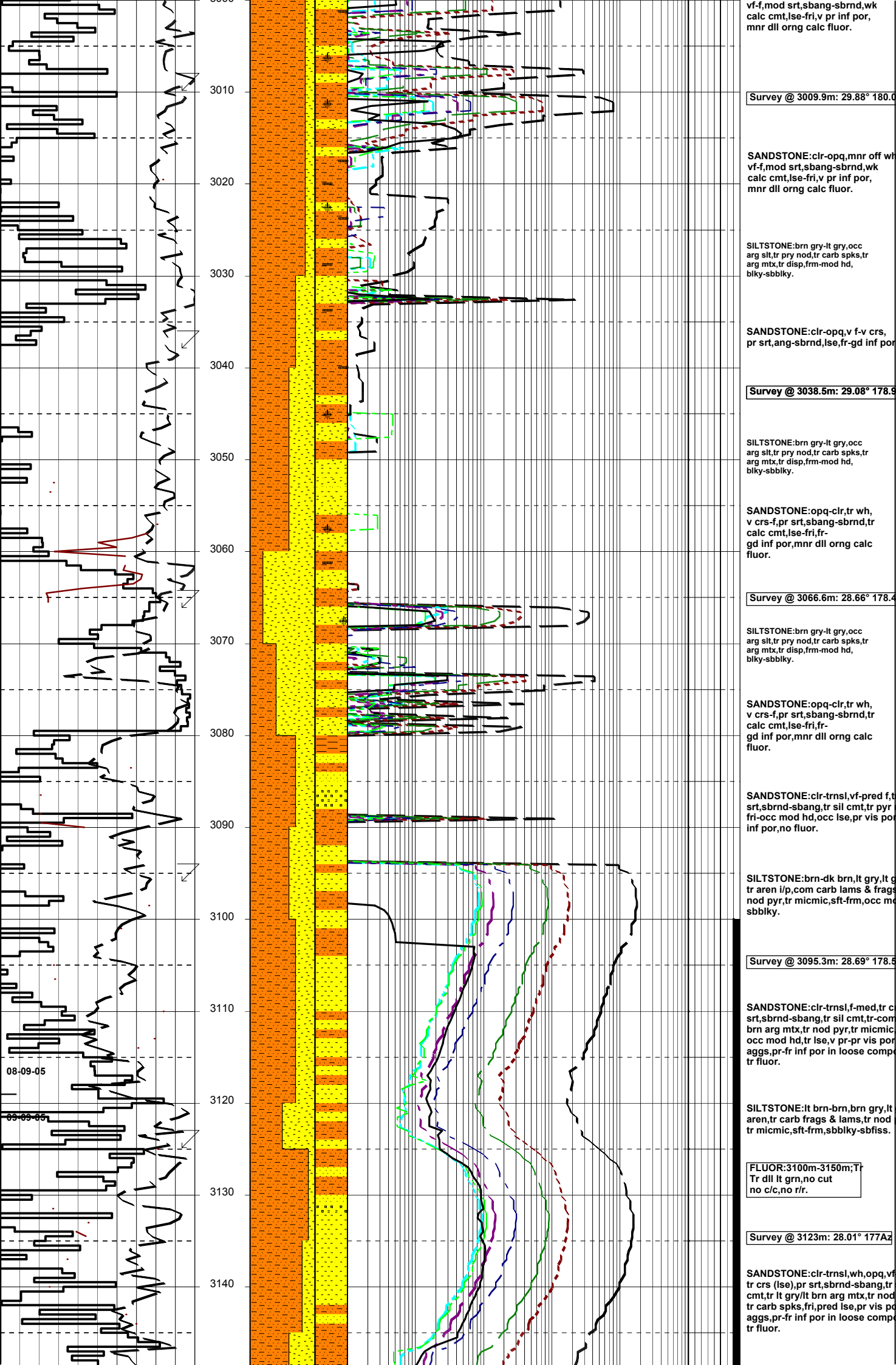
MASTERLOG

BASKER 2

GENERAL	POSITION	HOLE / CASING INFO	DATE / DEPTH	ENGINEERS
Country : AUSTRALIA	Latitude : 38°17'58.51"S	17 1/2" Hole to (mMDRT): 1006	Spud Date : 14-08-2005	D. ADDERLEY
Permit : VIC RL6	Longitude : 148°42'24.72"E	12 1/4" Hole to (mMDRT) :	Total Depth Date :	A. DUNN
Field : BASKER	UTM Co-ord X (m E): 649251.9	8 1/2" Hole to (mMDRT) :	Total Depth (mMDRT):	S. RAJA
Basin : GIPPSLAND	UTM Co-ord Y (m N): 5759566	30" Conductor @ (mMDRT) : 208	True Vertical Depth (mTVDSS):	P. RADY
Well Type : APPRAISAL	RT to MSL (m): 21.5	13 3/8" Shoe @ (mMDRT) : 1000	Log Scale : 1/ 500	
Rig Name : Ocean Patriot	RT to Sea Bed (m): 174	9 5/8" Shoe @ (mMDRT) :	Final Status :	

ABBREVIATIONS	LITHOLOGY LEGEND	ENGINEERING LEGEND
MW Mud Weight FV Funnel Viscosity PV Plastic Viscosity YP Yield Point Gel Gel Strength WL Water Loss KCl Potassium Chloride Cl Chlorides Incl Inclination Az Azimuth	<p>WOB Weight on Bit (klbs) RPM Rotations Per Min FLW Flow Rate (gpm) SPP Pump Pressure (psi) RR Re-Run Bit TG Trip Gas CG Connection Gas BG Background Gas DGP Drilled Gas Peak MM Mud Motor</p> <p>Marl Clay, Sand Lime do. Shale ca. Shale sandy Shale si. Claystone</p> <p>Quartzite ar. Sandstone bitum. Shale (b) Claystone Fine SST sa. Shale</p> <p>Siltstone f to vf Sand f Fossils Algae Lithic Fragment Belemnits</p> <p>Rudists Sponges Sporomorphs Tigillites Vertebrates Wood silicified</p>	<p>Essai non concl Aucun fluide re TEST Test Filtrat Deviation curve Mud gain Boue</p> <p>Mud loss RFT FIT DST Cement</p>





vf-f,mod srt,sbang-sbrnd,wk
calc cmt,lse-fri,v pr inf por,
mnr dll org calc fluor.

Survey @ 3009.9m: 29.88° 180.0

SANDSTONE:clr-opq,mnr off wh
vf-f,mod srt,sbang-sbrnd,wk
calc cmt,lse-fri,v pr inf por,
mnr dll org calc fluor.

SILTSTONE:brn gry-lt gry,occ
arg slt,tr pry nod,tr carb spks,tr
arg mtx,tr disp,frm-mod hd,
blky-sbbiky.

SANDSTONE:clr-opq,v f-v crs,
pr srt,ang-sbrnd,lse,fr-gd inf por

Survey @ 3038.5m: 29.08° 178.9

SILTSTONE:brn gry-lt gry,occ
arg slt,tr pry nod,tr carb spks,tr
arg mtx,tr disp,frm-mod hd,
blky-sbbiky.

SANDSTONE:opq-clr,tr wh,
v crs-f,pr srt,sbang-sbrnd,tr
calc cmt,lse-fri,fr-
gd inf por,mnr dll org calc
fluor.

Survey @ 3066.6m: 28.66° 178.4

SILTSTONE:brn gry-lt gry,occ
arg slt,tr pry nod,tr carb spks,tr
arg mtx,tr disp,frm-mod hd,
blky-sbbiky.

SANDSTONE:opq-clr,tr wh,
v crs-f,pr srt,sbang-sbrnd,tr
calc cmt,lse-fri,fr-
gd inf por,mnr dll org calc
fluor.

SANDSTONE:clr-trnsl,vf-pred f,t
srt,sbrnd-sbang,tr sil cmt,tr pry
fri-occ mod hd,occ lse,pr vis por
inf por,no fluor.

SILTSTONE:brn-dk brn,lt gry,lt g
tr aren i/p,com carb lams & frags
nod pry,tr micmic,sft-frm,occ m
sbbiky.

Survey @ 3095.3m: 28.69° 178.5

SANDSTONE:clr-trnsl,f-med,tr c
srt,sbrnd-sbang,tr sil cmt,tr-com
brn arg mtx,tr nod pry,tr micmic
occ mod hd,tr lse,v pr-pr vis por
aggs,pr-fr inf por in loose comp
tr fluor.

SILTSTONE:lt brn-brn,brn gry,lt
aren, tr carb frags & lams, tr nod
tr micmic,sft-frm,sbbiky-sbfiss.

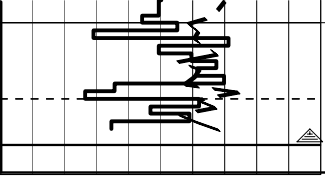
FLUOR:3100m-3150m;T
Tr dll lt grn,no cut
no c/c,no r/r.

Survey @ 3123m: 28.01° 177A2

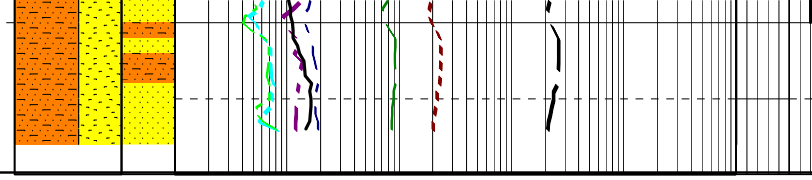
SANDSTONE:clr-trnsl,wh,opq,vf
tr crs (lse),pr srt,sbrnd-sbang,
cmt,tr lt gry/lt brn arg mtx, tr nod
tr carb spks,fri,pred lse,pr vis por
aggs,pr-fr inf por in loose comp
tr fluor.

08-09-05

08-09-05



3150
3160



SILTSTONE:brn/dk brn,dk brn g
vf SST i/p,grd to CARB SLTST i/
lams & frags,sft-frm,sbfiss-sbbli

Back ream to casing shoe